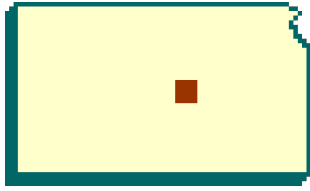


# McPherson County



K-State Research & Extension  
600 West Woodside, McPherson KS 67460  
620-241-1523 FAX 620-241-3407  
[www.mcpherson.ksu.edu](http://www.mcpherson.ksu.edu)

## OCTOBER 2021

### We Are Hiring!

McPherson County Extension is seeking a Community Connections Program Assistant. Full or Part-time applicants will be considered. This position will assist the McPherson County Extension Staff in designing and implementing programs in the communities that we serve. Work may focus in all program areas including Agriculture, Family and Consumer Sciences, Community Vitality and 4-H Youth Development.

Please visit [www.mcpherson.ksu.edu](http://www.mcpherson.ksu.edu) for complete position description and application. Screening of applicants will begin October 7 and continue until filled.



### State Extension Advisory Council

The State Extension Advisory Council (SEAC) serves as a consultative group to the Kansas State Director of Extension on concerns relating to Extension. Members of this committee are current Extension Council Executive Board members or have served on the local board in the past two years. A call for nominees and elections for these positions are held each fall. The members of SEAC come from all areas of Kansas. McPherson County is currently represented by Northeast Region members, which includes Lisa Brummett, Riley County, Betsy Patrick, McPherson County, Sheri Grinstead, Reno County and Don Hellwig, Dickinson County. For more information on SEAC or to find contact information for SEAC members, please visit [https://www.ksre.k-state.edu/boardleadership/about-ksre/seac\\_home/index.html](https://www.ksre.k-state.edu/boardleadership/about-ksre/seac_home/index.html).

### Time To Get Creative

Happy Fall! Everyone needs a little fun to help welcome the season! We invite you to participate in the KSU YLP Pumpkin Decorating Contest. There are a lot of creative minds out there and we want you to show us what you've got! Below are the details. Winners will be announced on our Facebook page @ksuylp after November 1. We will also be posting pictures of the entries and identifying the creator on our page.

- Pumpkins may be carved, painted, decorated, or a combination of any crafty method.
- Theme MUST be K-State or livestock/animal science-related.
- Both youth and adults may enter.
- Participants will upload up to two (2) photos of their finished pumpkin by October 31.
- Entry link: [https://k-state.qualtrics.com/jfe/form/SV\\_9@xtzp9S26EvtGK](https://k-state.qualtrics.com/jfe/form/SV_9@xtzp9S26EvtGK)

Winners will receive K-State swag and free admission to the junior producer day of their choice.





# Ag News

**Shad Marston**  
**County Extension Agent**  
**Agriculture and Natural Resources**



October, the beginning of a new year in 4-H.

Looking back at my childhood memories, I cannot forget my time growing up in a small community. Family, church, school and being a 4-H member sponsored by the K-State Research and Extension program, come to mind first and foremost. While finishing up with this year's Kansas State Fair, 4-Hers all across the State are ending their year's projects and duties while starting to plan for next year. October is the beginning of the new year for 4-H and for 4-H'ers, it's the time to enroll and build on their project areas.

We all know 4-H is more than just showing an animal or baking a cake. 4-H can be as big as one's dreams, with an unlimited amount of projects and resources to fit. Through these projects, members set goals, learn the necessary skills, and exhibit or demonstrate their skills at events like county fairs, speaking contests and competitions. I know first-hand that 4-H can teach young kids and adults lessons in life that are very beneficial to becoming a successful community member. Let's examine some facts about 4-H and their members and see how leadership grows with 4-H. Kansas 4-H programs help kids grow into confident, capable and caring adults. 4-H gives children the skills to lead for a lifetime. 4-H is the America's largest youth development organization, empowering nearly six million young people across the U.S., with over 86,000 youth right here in Kansas. Our county has six clubs that meet monthly and give youth the opportunities to share the project work (speak out), plan community service activities (give back) and come together to improve our communities (lead). In addition, 4-H grows character, curiosity, friendships, leadership and responsibility. 4-H'ers are 2X more likely to participate in STEM activities outside of school. 4-H'ers are 4X more likely to contribute to their communities and lastly, 4-H'ers are 2X more likely to make healthier choices.

It doesn't matter where you live or what you want to be when you grow up, McPherson County 4-H has opportunities for all. 4-H is a club for kids and their families who take part in fun, practical projects. Some might say, something for everyone.

## Armyworms

Week Fall armyworm infestations in early-planted wheat in central Kansas There have been some heavy infestations of fall armyworms in early-planted wheat in Ellis County, with some plantings completely destroyed, and the larvae trying to finish up on the pigweeds. This is a very asynchronous, late generation of fall armyworm, with most larvae now almost mature, but some still quite small. Treatment will not be justified at this point. The best recommendation is to just wait until worms have finished feeding, recalling that larvae can "march" across to new fields after killing plants. If larvae are still active in adjacent fields, it will be best to wait until later in the planting window (up to 2nd week of October for Ellis County). The emerging moths should migrate south without laying any more eggs. There have been many reports across the Midwest of large fall armyworm populations damaging crops, lawns and turf, so they are having a good year. There were some reports of true armyworms also. The color of these caterpillars is highly variable; the dark color depends on melanin deposition, which can increase at low temperatures, and the intensity of bright colors depends on plant pigments obtained in the diet. To help distinguish between these two worms, refer to the features identified in photos shown below.

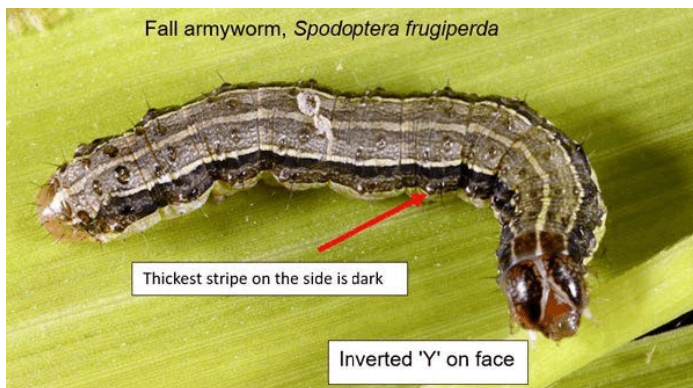


Figure 1: Fall army worm showing key identifying features. Photo by J. Obermeyer

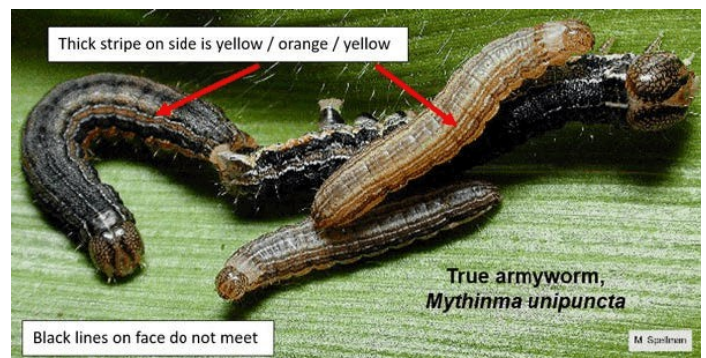


Figure 2: True armyworm with key identifying features. Photo by M. Spellman

# K-State Activities

## K-State Plans ‘Family & Friends’ Reunion - October 15

MANHATTAN, Kan. – The Kansas State University Department of Animal Sciences and Industry has announced plans for its seventh annual Family & Friends Reunion at the open-air venue, the Stanley Stout Center, on Friday, Oct. 15.

Organizers are encouraging alumni and friends to be “Together Again” and reunite with friends, faculty, staff and students.

Starting at 5:30 p.m., the event will feature premium quality meats and dairy products, including pork, beef and chicken; live entertainment by the band, Too Many Degrees, featuring K-State professor David Grieger; and a Junior Wildcat Barnyard area designed for the youngest members of the ASI family.

The activities also include an appearance by the “best band in the land,” the K-State Marching Band.

A highlight of this year’s reunion will be the presentation of the Don L. Good Impact Award to U.S. Premium Beef (USPB). USPB is a consumer-based beef marketing company that is independently owned by beef producers ranging from commercial ranchers to feeders. The organization has been responsible for providing better opportunities for producers to earn premiums based on the quality of their animals.

The award, presented by the Livestock and Meat Industry Council Inc. (LMIC), is named in honor of Good, who is a former head of the Kansas State University Department of Animal Sciences and Industry (ASI), and recognizes positive impact on the livestock and meat industry or agriculture.

“Plan to join us for an evening of great food, good music and catching up with friends and ASI faculty and staff,” said Mike Day, K-State ASI department head. “Register today for this great opportunity to have our ASI family together again.”

The pre-registration deadline is Tuesday, Oct. 5. You can register online at [asi.ksu.edu/familyandfriends](http://asi.ksu.edu/familyandfriends). For more information about the event you can also follow the reunion’s social media channels.

For questions about the event, contact Lois Schreiner at 785-532-1267 or [lschrein@ksu.edu](mailto:lschrein@ksu.edu).



## 2021 KSU Swine Day

Make plans now to attend the 2021 K-State Swine Day to be hosted at the KSU Alumni Center in Manhattan, Kansas, on Thursday, November 18. The trade show, with more than 30 exhibitors, will begin at 8 a.m. We have a great program lined up for you including:

- Latest update on K-State Applied Swine Nutrition Research: 15-minute rotation including research highlights on Nutrition, Management, Feed Processing and Feed Safety
- *Swine Health Improvement Plan* presented by Dr. Rodger Main, Iowa State University Veterinary Diagnostic Laboratory Director
- *Adapting to a Changing Swine Industry Landscape* by Dr. Jon De Jong, Pipestone Nutrition President

The fee to register is \$25 per person, if paid by November 10 and \$50 after that date or at the door. Students may attend free of charge if they register by November 10. Registration is available online at [www.KSUSwine.org](http://www.KSUSwine.org).

## Kansas Bankers Association Conservation Awards Nominations due December 3

Nominate a deserving Kansas producer or landowner for the 2021 Kansas Bankers Association Conservation Awards Program. This year, the Kansas Bankers Association, K-State Research and Extension, and the Kansas Department of Wildlife and Parks have announced six award categories:

- **Energy Conservation**
- **Water Quality**
- **Water Conservation**
- **Soil Conservation**
- **Windbreaks**
- **Wildlife Habitat**

The purpose of this program is to stimulate a greater interest in the conservation of the agricultural and natural resources of Kansas by giving recognition to those farmers and landowners who have made outstanding progress in practicing conservation on their farms. In 2020, 197 Kansas producers and landowners were recognized through this program.

Nominations can be made by any person in the county. They should be sent to the County Extension Agricultural Agent or the Kansas Department of Wildlife, Parks, and Tourism District Biologist by December 3, 2021.

# Considerations When Planting Wheat Into Dry Soil

Soils in portions of western and central Kansas have become steadily drier through the late summer and early fall. Topsoil conditions are now very dry in many areas of Kansas. What options are available for producers in these regions with wheat still to plant?

## Option 1: “Dust in” the wheat

Producers can choose to “dust in” the wheat at the normal seeding depth and normal planting date, and hope for rain (Figure 2). Some farmers may consider planting it shallower than normal, but this could increase the potential for winterkill or freeze damage. Planting the wheat crop at the normal depth and hoping for rain is probably the best option where soils are very dry. The seed will remain viable in the soil until it gets enough moisture.



**Wheat dusted in at Marquette, October 2019.**

**Photo by Shad Marston.**

Before planting, producers should look at the long-term forecast and try to estimate how long the dry conditions will persist. Current short term outlook (8 to 14-day) favors slightly better chances at precipitation in the west. Looking long-term, the October outlook favors drier than normal conditions across most of Kansas.

If it looks like there’s a good chance the dry weather will continue until at least the back end of the optimum range of planting dates, producers should treat the fields as if they were planting later than the optimum time, as the emergence date will be delayed. Rather than cutting back on seeding rates and fertilizer to save money on a lost cause, producers should increase seeding rates, consider using a fungicide seed treatment, and consider using a starter phosphorus fertilizer to improve early season development. However, producers should be cautious with in-furrow nitrogen or potassium fertilizers as these are salts and can make it more difficult for the seed/seedling to absorb water needed for germination. The idea is to make sure the wheat gets off to a good start and will have enough heads to have good yield potential, assuming it will eventually rain and the crop will emerge late. Wheat that emerges in October may still hold full yield potential, but wheat that emerges in November almost always has fewer fall tillers and therefore can have decreased yield potential.

There are some risks to this option. First, a hard rain could crust over the soil or wash soil off planting ridges and into the seed furrows, potentially causing emergence problems. Another risk is the potential for wind erosion if the field lies unprotected with no ridges. Also, the wheat may not come up until spring, in which case it may have been better not to plant the wheat at all and plant a spring crop instead. In fact, not planting wheat and allowing soil moisture to build for a summer crop planted next spring is an option.

Probably the worst-case scenario for wheat planted into dry soils would be if a light rain occurs and the seed gets just enough moisture to germinate but not enough for the seedlings to emerge through the soil or to survive very long if dry conditions return. Once the coleoptile extends to the soil surface, the plant must have enough moisture to continue growth otherwise it will perish. This situation may be worsened if producers are planting wheat following a summer crop such as corn, soybean, or sorghum, which depleted subsoil moisture through late summer. Without subsoil moisture to sustain growth, there can be a complete loss of the wheat stand. If late October brings cooler temperatures, dusting wheat in becomes a more interesting option as soil moisture from a possible rainfall event could be stretched further.

## Option 2: Plant deeper than usual into moisture with hoe drill

Planting deeper than usual with a hoe drill can work if the variety to be planted has a long coleoptile, the producer is using a hoe drill, and there is good soil moisture within reach. The advantage of this option is that the crop should come up and make a stand during the optimum time in the fall. This would keep the soil from blowing. Also, the ridges created by hoe drills also help keep the soil from blowing.

The main risk of this option is poor emergence. Deep-planted wheat normally has below-normal emergence, so a higher seeding rate should be used. Any rain that occurs before the seedlings have emerged could add additional soil into the seed furrow, making it even harder for the coleoptile to reach the soil surface. Any time you increase the seeding depth, the seedling will have to stay within the soil just that much longer before emerging through the soil surface.

Delayed emergence leads to more potential for disease and pest problems. Additionally, deep-planted wheat generally results in reduced tillering and consequently a reduced number of heads, which directly reduces the yield potential of the crop. It’s even possible that the wheat would get planted so deep that it would germinate but never emerge at all, especially if the coleoptile length is too short for the depth of planting. Generally speaking, it’s best to plant no deeper than 3 inches with most varieties. It is also important to keep in mind that ridges formed by narrow press wheels can make the effective planting depth much deeper if the seed furrows fill in during a heavy rainfall event.

## Option 3. Wait for rain before planting

To overcome the risk of crusting or stand failure, producers may decide to wait until it has rained and soil moisture conditions are adequate before planting. Under the right conditions, this would result in good stands, assuming the producer uses a high seeding rate and a starter fertilizer, if appropriate. If it remains dry well past the optimum range of planting dates, the producer would then have the option of just keeping the wheat seed in the shed until next fall and planting spring crop next year instead.

The risk of this option is that the weather may turn rainy and stay wet later this fall, preventing the producer from planting the wheat at all while those who dusted their wheat in have a good stand. There is also the risk of leaving the soil unprotected from the wind through the winter until the spring crop is planted.

Crop insurance considerations and deadlines will play a role in these decisions. Another consideration is to delay the bulk of nitrogen application until topdress time in the spring, as wheat does not require much nitrogen in the fall. This would defer expenses until an acceptable wheat stand is assured.

# Challenges With Smooth Bromegrass Hayfields In Eastern Kansas

Bromegrass is one of the most important cool-season grasses in the eastern half of Kansas. It grows best during months with cooler weather, primarily March through June and September through November, becoming semi-dormant during the hot, dry summer months. However, in the last few weeks, some farmers have been struggling with bromegrass fields which are not greening up as expected this time of the year.

Grub worms are the most common insect problem in smooth brome. Their larvae feed on the roots and rhizomes. However, in 2021 the problem has been fall armyworms. Small worms from these migratory pests feed on leaf material. Late haying or hot/dry weather may interact with armyworm infestations.

## Some points to consider:

- Smooth brome hay should be cut between early heading and full bloom (usually mid-May to June 1) to optimize quantity and quality. However, due to the weather during 2021 spring/summer, some of the fields were cut late (July or August), and this late-cutting was followed by drought. While some sparse rain occurred, it was not enough to match the plants' needs in most fields.
- Worms, such as fall armyworms, have been a challenge in 2021. The caterpillar phase lasts from 14 to 21 days. However, in the last 2 or 3 days before pupating in the soil, caterpillars will eat ~90% of their total intake. For that reason, even when growers are scouting their fields eventually, the damage can be irreversible after two or three days without visiting a field. In some cases, it seems the field was “harvested” by the worms. In addition, some fields were sprayed two or three times in a row this year, leading to severe damage to the plants.
- Smooth bromegrass requires annual fertilization for optimum production and to assure long-term productivity. Soil testing bromegrass pastures and meadows will provide an accurate picture of the nutrients available with particular attention paid to pH, phosphorus, and potassium. Keep in mind that every time a hayfield is cut, around 12 lb. of  $P_2O_5$  and 40 lb. of  $K_2O$  is removed per ton of forage harvested.

In some fields, plants may have started to grow new leaves using their reserves after a late cut and the worm invasion was hard to control (or not controlled in time). Some of the fields also have low-nutrient availability, which makes the regrowth challenging and creating irreversible damage.

Smooth brome can be planted (or replanted) in late summer, early fall, winter, or early spring in different regions of Kansas (Figure 1). However, late fall and winter planting is not recommended on droughty claypan soils because smooth bromegrass will not survive if planting is followed by hot, dry weather conditions. While the establishment of cool-season grasses is most successful with late summer or early fall plantings, replanting in late fall especially with a dry forecast is a risky decision for farmers in eastern Kansas. Additionally, seed and fertilizer prices are very high, leading to a less-favorable planting scenario.



## Optimum Seeding Dates for Smooth Brome

	Zone 1	Zone 2	Zone 3	Zone 4
Fall	Aug 10–Sept 15	Aug 15–Sept 20	Aug 15–Sept 20	Aug 15–Oct 1
Winter	Nov 1–Mar 1	Nov 15–Feb 15	Dec 1–Feb 15	Not recommended
Spring	Mar 1–Apr 1	Feb 15–Apr 1	Feb 15–Apr 1	Not recommended

**Figure 1. Optimum seeding dates for smooth brome in Kansas. Map from K-State Research and Extension.**

At this point, we are reaching the end of the optimum planting date for smooth brome for the majority of the state (Figure 1). Given the current dry weather and the dry forecast, the best option may be to control weeds and wait to replant next year at the optimal time. If spring planting is considered, weed control and worm scouting are essential in the early stages to ensure adequate establishment. It is important to remember that smooth brome should never be cut before the early heading stage or below a stubble height of four inches as stand reduction or loss can occur, particularly during dry soil conditions.



# Clover Corner

**Lindsey Mueting**  
**County Extension Agent**



**K-STATE**  
Research and Extension



Welcome to Fall! The start of a brand new 4-H year! I want to congratulate everyone who participated in the Kansas State Fair. You can find all results online. <https://www.fairentry.com/Fair/Results/15710>

Take a look and congratulate your fellow 4-H'ers!

Now it is time to start thinking about the new 4-H year, what goals you will set and what you will learn and accomplish in 2021-2022. Please remember that all enrollment is done online! Beginning Oct 1 you can re-enroll for the year and pick new projects as well as update your participation (health) form! Be sure to check out the information on the next page- you will have the opportunity to have your program fee paid for... if you hurry! Remember, you can log in at any time during the year to keep up on your project enrollment and check your information. We will also continue to provide curriculum to each early enrolled member!

~ Lindsey

## Calendar of Events

- Oct 1 Record Books/Awards Due!
- Oct 3-9 National 4-H Week
- Oct 6-17 Paper Clover Fundraising  
*Tractor Supply Company*
- Oct 7 4-H Council, 7 pm
- Oct 8 Birthday Kit Collections Due
- Oct 9-10 484H (Service Weekend)
- Oct 16 NELE - Rock Springs
- Oct 21 American Legion 4-H Family Night
- Oct 23 Tailgate Service Project Party
- Oct 23 Officer Training & Family Event
- Nov 7 Achievement Celebration (TBA)

## American Legion 4-H Family Night

Remember, the October 21 event will be to benefit 4-H. Mark the date on your calendar now and plan to join us!

Each family needs to sell at least 6 tickets. If you can sell more, PLEASE DO! There is no limit to the amount of tickets we can sell!

Please come pick those up at the Extension Office or make arrangements for how we can help get these to you! Many people have found success in asking local businesses and organizations to help and friends, family and neighbors are a great ask! Also please

Thursday, October 21st  
5:00 PM-6:30 PM  
**MCPHERSON AMERICAN LEGION FAMILY NIGHT  
TO BENEFIT 4-H!**

Choose Any 4 Of The Following For \$5:

- Hamburger
- Fries
- Soft Drink
- Dessert

**Dine In or Carry-Out Available**

Tickets are \$5 each:  
To purchase tickets: contact a local 4-H Member, stop by the Extension Office or visit [tinyurl.com/4-HLegionNight](https://www.tinyurl.com/4-HLegionNight) to reserve tickets online and choose a delivery or pick-up method!

Help us serve our community!

share, share, share on Social Media! Share on personal pages, group pages and send notes to friends asking for support!

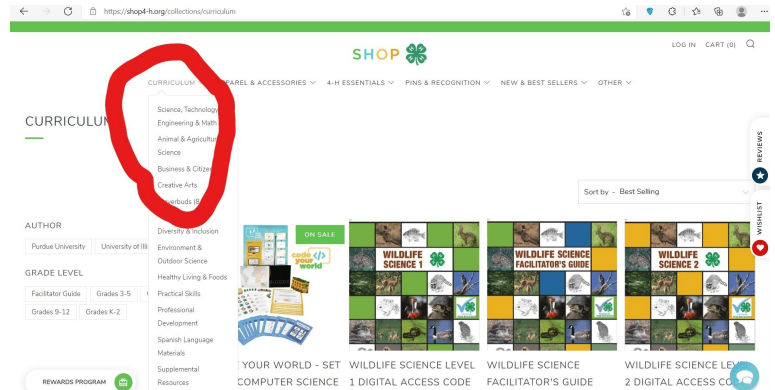
Our other responsibility includes providing desserts and a handful of people to help at the event. Please sign-up for what you can do to help:  
<https://www.signupgenius.com/go/70A0D4BA5AF2BA7FF2-american1>

# WELCOME TO THE NEW 4-H YEAR!!!

Time to ENROLL! Please enroll starting October 1 at <https://v2.4honline.com> Now... for exciting news...

**NEW THIS YEAR!** If you enroll between Oct 1 and Nov 15 McPherson County 4-H Development Fund will cover your \$15 state program fee! If you enroll between these dates, please select "Check" as your payment and it will be covered! Members are responsible for their individual fees after November 15.

**CONTINUING THIS YEAR!** Each member who is fully enrolled by November 15 has the opportunity to select two curriculum books that will be ordered for them with Development Fund monies. Please visit [www.shop4-h.org/curriculum](http://www.shop4-h.org/curriculum) You will need to email Lindsey or Terra with your two book options- please have the sku code from the website or at least the curriculum name and level. Submit your requests by November 15. Orders will be placed with hopes to be ready to pick up in early December.



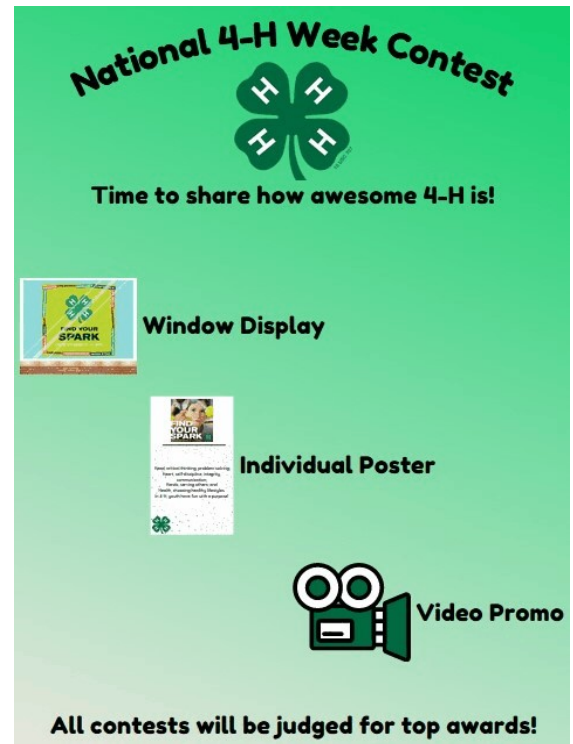
It's time for... **National 4-H Week!!!** Do you have an idea of how to promote 4-H to others? Now is the time to do it! National 4-H Week is October 3-9. Many clubs are planning activities or promotional things during this time. Participate in those, or invite a friend to your 4-H meeting! Spread the word and let people know what you do and learn in 4-H!

Don't forget to be planning your ways to promote 4-H. Entering in the promo contests is a great way to promote 4-H and maybe receive prizes!! There will be three contests for National 4-H Week this year!

1. Clubs or groups can enter a Window Display promoting 4-H. Think of where these might be located... store fronts, school entry way or display case, libraries, etc. These do not HAVE to be in a store window! Displays can be located in any public space within the county. Remember to get permission! (The case at the McPherson County Courthouse is assigned to 4-H for the month of October and is NOT claimed at this point. Please contact Lindsey if you would be willing to fill this case!)
2. Individual Poster Contest. 4-H members can create a standard size poster promoting 4-H. Posters can have any theme the entrant would like. These need to be hung in a public place for the week!
3. Video Promo Contest. NEW this year will be a video promo contest! All members, projects or clubs are invited to complete a short video promo for 4-H! This can be a basic recording or edited in any way you would like! 30 seconds to 3 minutes is the recommended time. Please email your video promo entry to Lindsey and share on any social media you can to help spread the word about 4-H!

All contests will be judged for top awards! Entries will need to have a short video (or picture for posters if you choose) that is posted to the McPherson County 4-H Facebook page or emailed/texted to Lindsey. For the window display and poster- the video can be a simple phone capture, but should show the display/poster well and can include any other info you would like the judge to know. These videos must be under 2 minutes.

Though it is recommended to have these items up for display by the start of 4-H week- entries must be in place with videos completed by October 5. Let us know what type of entry you have and where it is located when you email/post the video! Have fun and think outside the box... time to tell people how awesome 4-H is! Awards will be announced at Achievement Night!



## Fair Board Members Needed

The 4-H Fairboard consists of rotating members each year. That means the group is always in search of new members! If you enjoy the 4-H Fair and would be interested in making it happen, consider applying to be a member of the fairboard. We are looking for youth and adult members to help us plan, organize and run the fair. The applications are available in the Extension Office or can be emailed to you! This deadline has been extended to November 1, 5 PM. The McPherson County Extension Executive Board makes the final appointments for this group. If you have questions contact Lindsey.

## Officer Training & Family Event

Our annual Officer Training and Family Event will be held in Lindsborg on October 23. We are waiting on exact location confirmation, but plan on the Middle\High School. We will begin the event with an optional lunch at 12:15- followed by registration at 1:00 PM and the training kicking off at 1:15. We will conclude the day by 4:00. Also check out information on the Tailgate Service Project Party which will be held the same day/location starting at 10:00 AM.

Officer Training and Family Event will have something for everyone! Officer Training sessions as well as other educational and fun sessions will be available. You will be able to pick your session preferences during registration! Check your email and Facebook page for the registration link in the coming weeks!

We are still looking for many session leaders. Please let Lindsey know if you would be willing to help with this years event!

## Upcoming Opportunities for Service 484H

What is 484H?!? 48 Hours for 4-H'ers to serve our communities and make an impact on the state! According to The 4-H study of Positive Youth Development, 4-Hers are nearly 4 times more likely to make contributions to their communities. But just how much can they do? In one weekend this fall, 48-Hours of 4-H will challenge club members, adult leaders and 4-H alumni to explore their service capabilities and inspire the community around them by taking part in some type of service project during the weekend of October 9-10, 2021. Remember to report your work to the Extension Office!



## County-Wide Service Project - Birthday Kits

4-H Council has been planning a county-wide service project in conjunction with 484H!

We are asking every club to collect supplies for the birthday kits within their clubs, schools, or communities. We highly suggest you collect through 4-H week or as a kickoff to 4-H week! Collected items will need to be turned into the extension office by 5 pm on Friday, October 8.



Items we hope to collect include: Boxes of cake mixes, Cans of frosting, Disposable cake pans, Birthday candles, Gift bags, Birthday cards, Paper party plates and napkins, Inexpensive party favors - hats, noisemakers, etc., Decorations- items like paper streamers and centerpieces. Stay tuned for information on creating the kits and distributing them throughout our communities! What a fun way to serve others!



## Tailgate Service Project Party

The morning of Oct 23 starting at 10:00 AM (prior to Officer Training and Family Event) we will host a Tailgate Service Project Party with CKD! In 2019 this was a huge hit! Youth and groups will have booths set up with various service projects. All participants can walk around and do as many projects as they would like during the 2 hour period! If you have an idea for a booth YOU could set-up and haven't signed-up... talk with Lindsey and we will make room for you!! These will be hands-on activities for everyone to do! Watch your email for sign-up for this and OTFE (Oct 23).



## Achievement Celebration

Congratulations on completing a 4-H year! Now... it is time to celebrate together! The Achievement Night Committee is working hard to finalize details for a celebration event on the afternoon of Sunday, November 7. This will be open to ALL 4-Hers and families! Watch your email for final details and ticket ordering!

## Paper Clover

It is time again for the Paper Clover Campaign hosted by Tractor Supply Co. Between Oct 6 and Oct 17 customers can add \$1 (or more) to their bill to support 4-H! Share with your friends. The store would also LOVE for 4-H'ers or clubs to come out during the event to promote the campaign by showing projects, talking about 4-H, helping carry things out for customers, etc. The more visible 4-H is, the more money will come back our direction! All money from this years campaign will go towards camp scholarships! Please contact Tractor Supply for ideas or to set up a time to come out! Maybe they would even have a spot for your poster or window display for the contest!



## Calling All 4-H'ers 12 and Older!!!

A new 4-H year is about to kick off and it is time to decide what you would like to do for the year! Well if your 4-H age this coming year will be

12 or older you are invited to be a Junior Leader! If you are interested in this opportunity of leadership, service and fun, make sure to pick the project: Leadership: Jr. Leaders on 4-H Online to get all the informational emails!

We are also looking for an adult volunteer to help plan and carry out activities with this group in 2022!

Watch your email for a kick-off meeting to be scheduled soon!

## Adult Chaperone

From time to time, adults are needed to chaperone events for 4-H members. This may include hour long or day events or potential overnight travel. Often help with transportation is needed with the County vehicles. If you are willing to be called upon when chaperoning opportunities arise, please let Lindsey know. Some examples include Discovery Days, KYLP, Camp, Leadership trainings, etc. If you have other ideas where you would have an interest in volunteering, I would love to talk about that as well.

## Kansas Youth Leadership Forum... November 20-21, 2021

Build your leadership skills and potential through workshops, consulting groups, inspirational speakers and more. Details and available class sessions will be available soon! KYLF is for all youth 14-18 years old before Jan 1, 2022. Early bird registration will be due by Oct 15.

<https://www.kansas4-h.org/events-activities/conferences-events/kansas-youth-leadership-forum/index.html>

Don't forget that each qualifying 4-H member is eligible for one activity scholarship a year (this does NOT include the OzSome 4-H Camp Scholarship). The application can be found online: <http://www.mcpherson.k-state.edu/4-h/awards-recognition/scholarships/index.html> Don't forget to check it out if you want to attend any area or state camps or events... KYLF (above) would qualify!

## 4-H Council

It's a new council year! Let's start it off with a bang and every club in attendance! Council Representatives are a VERY important officer position in your clubs! Plan to meet at 7 PM on Oct 7 at the Extension Office. Remember, each club should have two youth and two adult representatives! This will be our election of officers meeting. Please be thinking about the leadership role you would like to take. Previous year officers should attend to complete their year duties- please find a replacement and let Lindsey know if you will be unable to attend.

## Livestock Judging Open to ALL!

We will have a new opportunity this year for youth to learn and grow!

Landon & Shelby Shaw will be heading up a livestock judging team for interested 4-Hers. 4-Hers do not have to be enrolled in livestock, just enrolled in 4-H. Livestock judging is a great opportunity to develop skills in decision making, speaking, and confidence, all while getting to evaluate good livestock.

If you are interested in more information or participating please contact the Extension Office or the Shaw family!

